

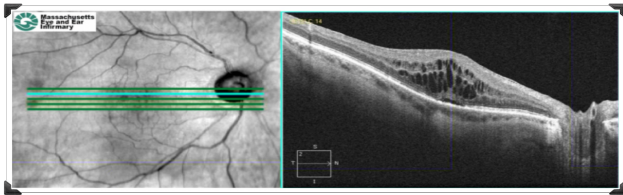


MANAGEMENT OF PSEUDOPHAKIC CME

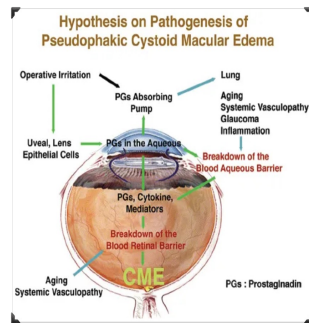
MOHAMMED TAWFEEQ, FRCS, MD

- FIRST DESCRIBED IN 1953 BY A. RAY IRVINE, WITH PATIENTS OF UNEXPLAINED VISUAL LOSS FOLLOWING ICCE.

- The cause of the visual loss later identified by Gass and Norton as marked macular edema with classic perifoveal petaloid pattern of staining and late leakage from the optic disc on FFA.

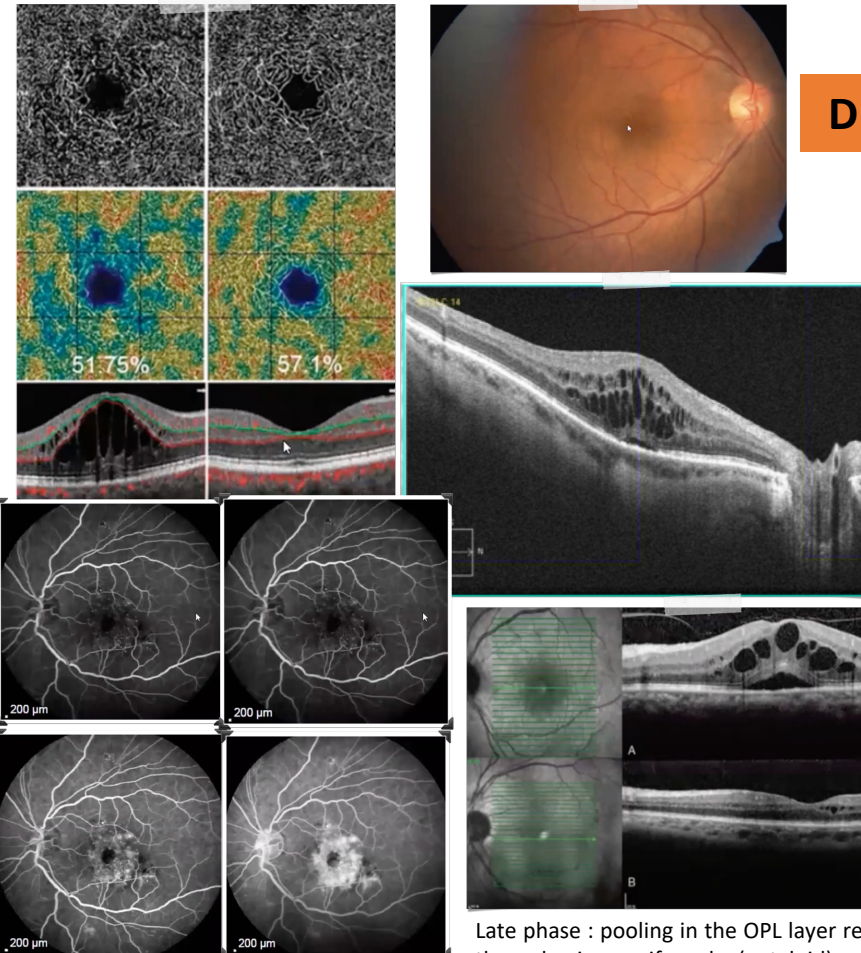


PATHOGENESIS



INFLAMMATORY THEORY.

TRACTIONAL THEORY



Highly valuable for diagnosis CME especially in uncertain cases.
Early phase : capillary dilation and leakage from small perifoveal capillaries.

DEFINITION

Acute CME : appears within 4 months of surgery.
Late onset: occurs after more than 4 months postoperatively.
Chronic CME: lasts more 6 months.
Recurrent.

OCT is an accurate and useful tool for detecting PCME, Intraretinal cystoid hydration appears initially in the inner nuclear layer and proceeds to involve the outer plexiform layer, finally accumulation of fluid in the sub retinal space can be found.
Intactness of the photoreceptor layer and ELM is a prognostic factor for good visual outcome.

TREATMENT

REASSURE AND OBSERVE

TOPICAL NSAID - STEROID

PERIOcular STEROID

INTRAVITREAL STEROID - ANTIVEGF

PPV

Isolated INL cystoid changes in the absence of OP morphology reported in a subset of these processes

DEFINITION

Complete success : was defined as BCVA > 6/9 and CMT < 330 u with no morphological retinal edema.
Any success : was defined anything less than complete success and reduction in CMT by > 150 u.

Systemic conditions	Ocular conditions	Surgery associated
High blood pressure	Uveitis	Trauma (iris, ciliary body, lens epithelial cells)
Diabetes	Diabetic retinopathy and maculopathy	Vitreous prolapse, vitreous traction vitreous loss
Age (elderly, children)	Age-related macular degeneration	Posterior capsule rupture
Arteriosclerotic vascular disease	Epiretinal membrane	Surgeon's personal experience (high phaco energy, long operative times)
	History of vein occlusion	
	Drugs (Prostaglandin-analogues)	
	Retinal dystrophies (retinitis pigmentosa)	
	Post-vitreous surgery	
	Radiation retinopathy	