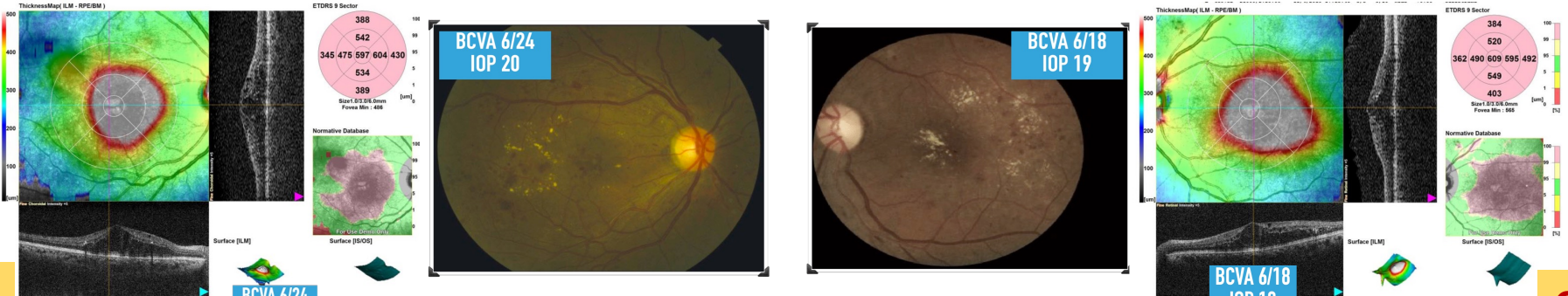




MANAGEMENT OF CHRONIC PERSISTENT DME...

MOHAMMED TAWFEEQ, FRCS, MD

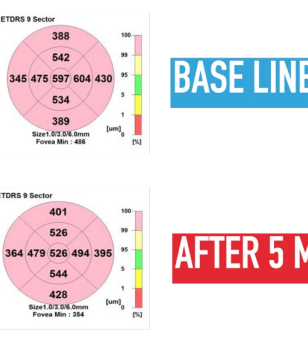
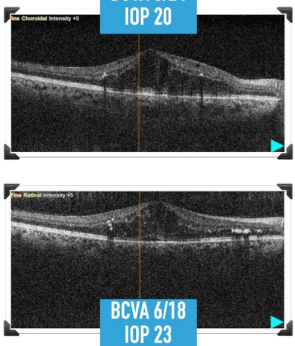


PDME

CPDME

eyes with OCT CST [optical coherence tomography central subfield thickness] of **250 μm or greater** at all completed visits through the 24-week visit despite receipt of at least four of the potential six protocol-mandated intravitreal anti-VEGF injections during this period.

eyes with persistent DMO (as previously defined) that have not yet achieved a **CST less than 250 μm and 10% or greater reduction relative to the 24-week study visit** on at least 2 consecutive study visits subsequent to the 24-week visit as of a given time point.



BASE LINE

BASE LINE

AFTER 5 M

AFTER 5 M

TO SUMMARISE

BASE LINE VA - OCT (CST)

20/25
6/9

20/40
6/12 OR BETTER

20/50
6/15 OR WORSE

OBSERVE
PROTOCOL V

ANY ANTI-VEGF
PROTOCOL T

AFLIBERCEPT
PROTOCOL T

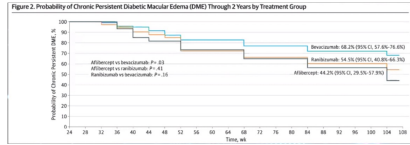
GIVE 3 INJECTION AND CHECK THE RESPONSE

GIVE 5 INJECTION AND CHECK THE RESPONSE

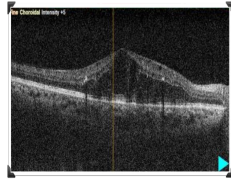
6 M
AFL 32%
RNZ 42%
BEV 66%

24 M
AFL 44%
RNZ 52%
BEV 68%

Persistent Macular Thickening Following Intravitreal Aflibercept, Bevacizumab, or Ranibizumab for Central-Involved Diabetic Macular Edema With Vision Impairment: A Secondary Analysis of a Randomized Clinical Trial



VEGF



**INFLAMMATORY
CYTOKINES**

